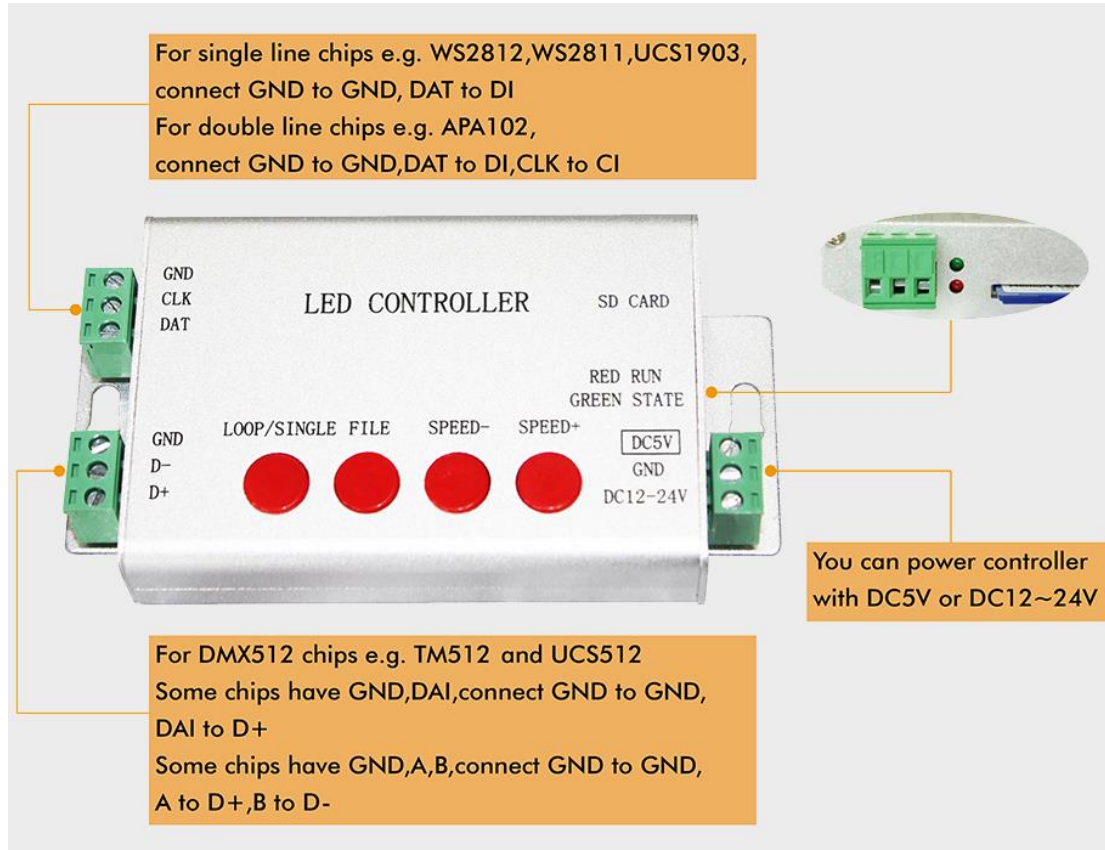


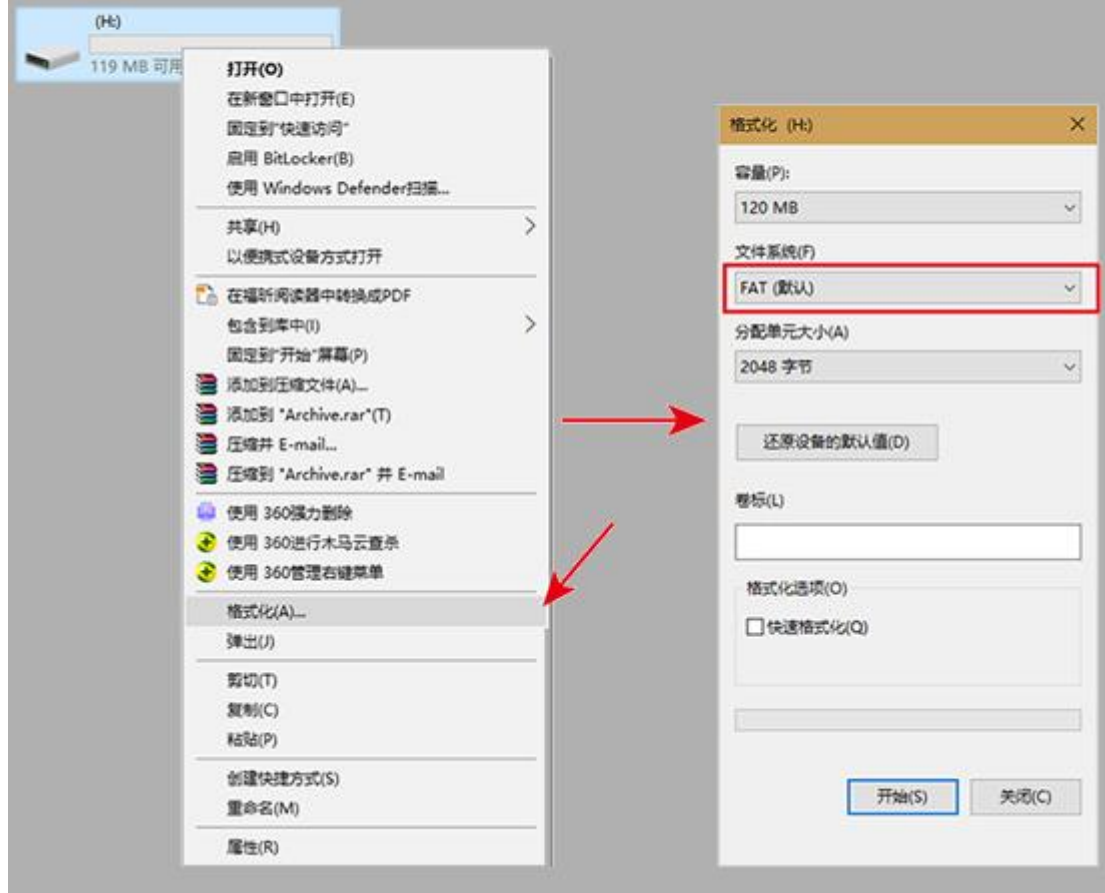
H801SB



Support Chips:

LPD6803, LPD8806, LPD1882, LPD1889, LPD6812,
LPD1883, LPD1886, DMX512, HDMX, APA102, MY9221,
UCS6909, UCS6912, UCS1903, UCS1909, UCS1912,
UCS8904, WS2801, WS2803, WS2811, WS2812, TM1803,
TM1804, TM1809, TM1812, TM1829, TA9912, TM1913,
TM1914, TM1926, TM1814, INK1003, LX1003, LX2003,
LX2006, TLS3001, P9813, P9816, SM16711, SM16716,
LD151x, LD153x, MBI6021, MBI6023, MBI6024

format SD card after many times of deleting or adding files



5 Kinds of Working Mode:

SD card control mode

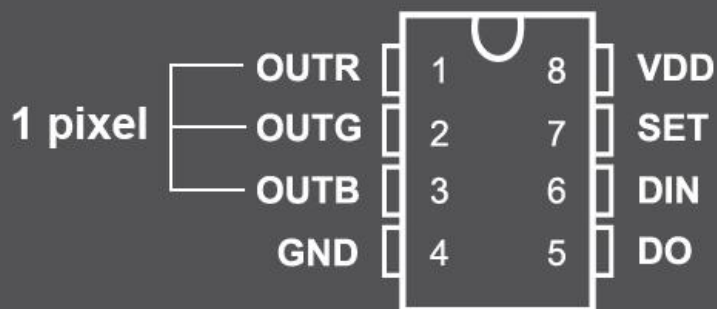
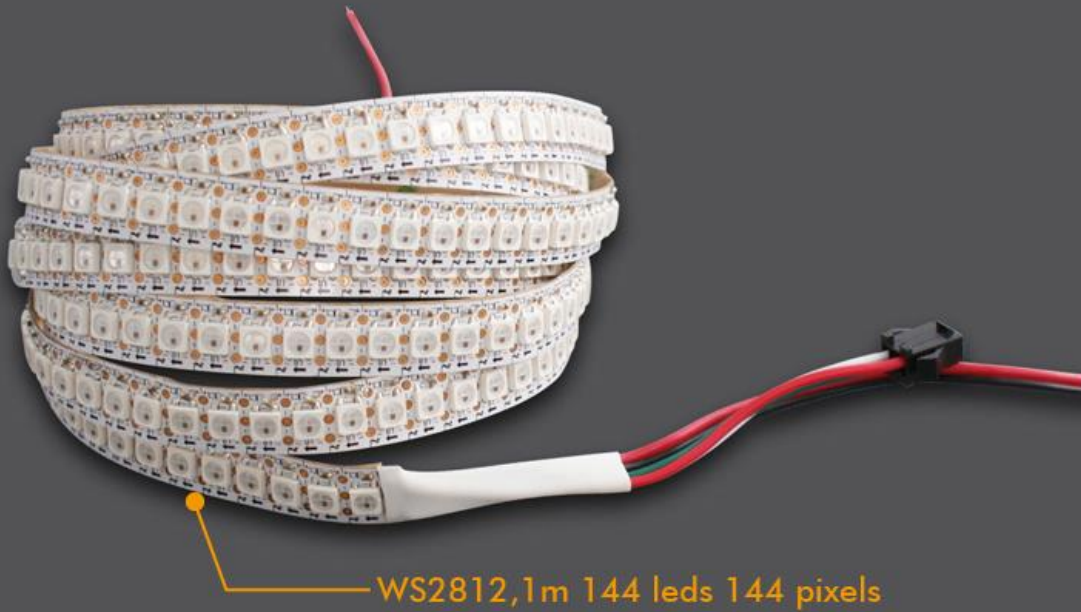


DMX512 Console mode
(connect DMX console)

Multiple controllers work
in synchrony

Set address for
DMX512 chips

H801SB drives maximum 2048 pixels



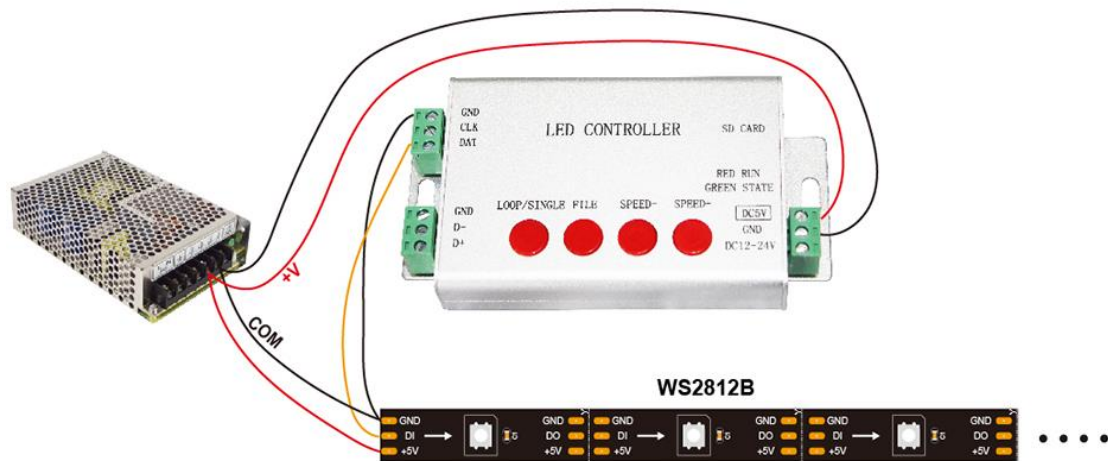


Manual

SD Card Control Mode

Step 1. Connect controller to lights

Assume you have a roll of 5m strip, 1m 30 pixels, WS2812B,
RGB(color order)



Step 2. Program with LED Build

LED Build download:

<http://www.huacanxing.com/download/105-en.html>

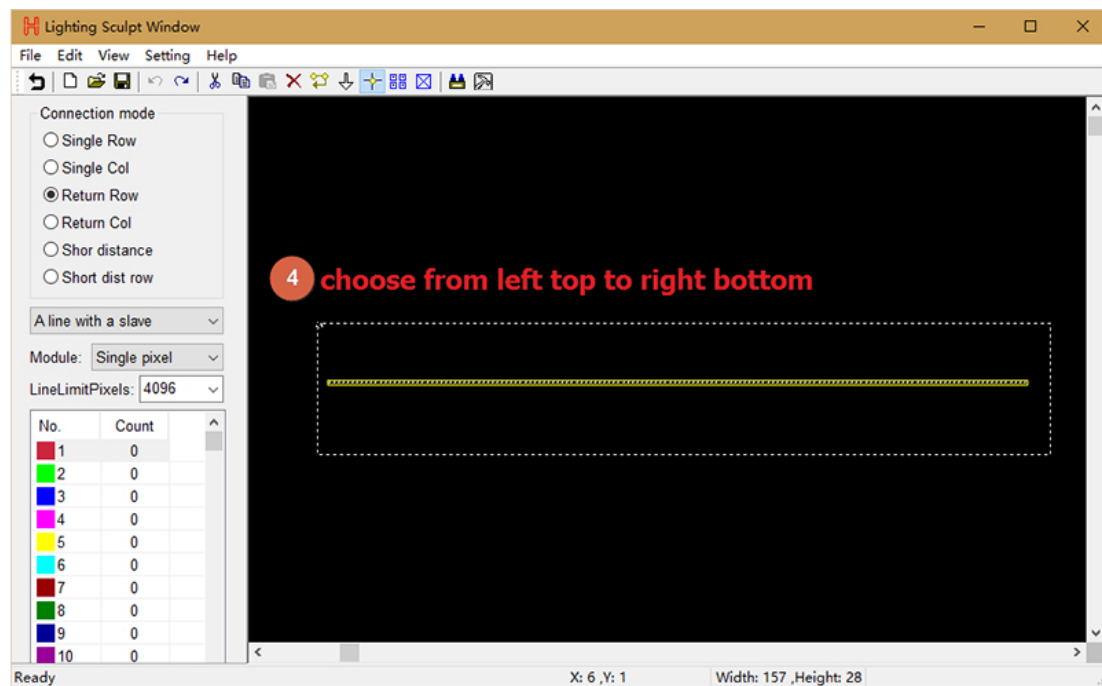
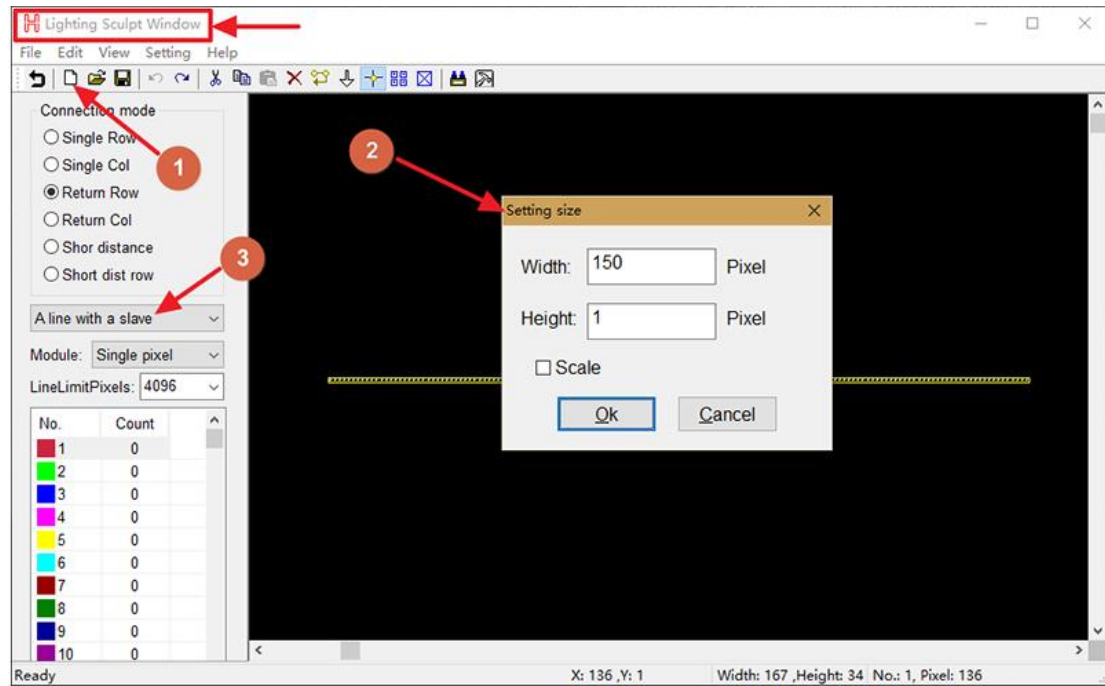
LED Build Tutorial Video:

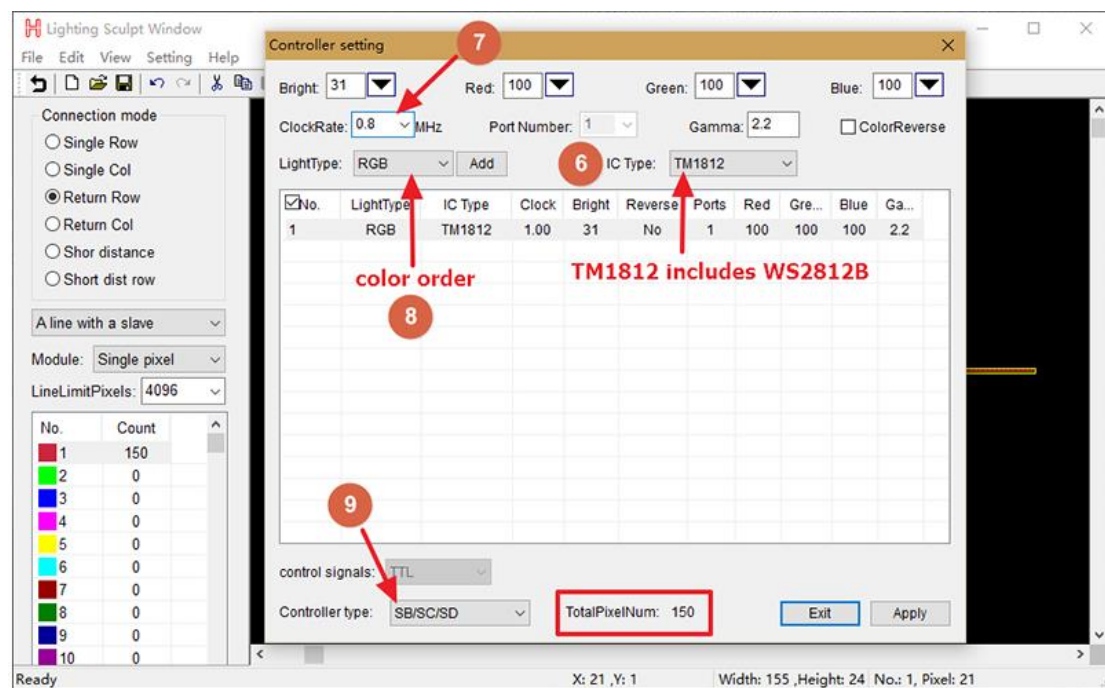
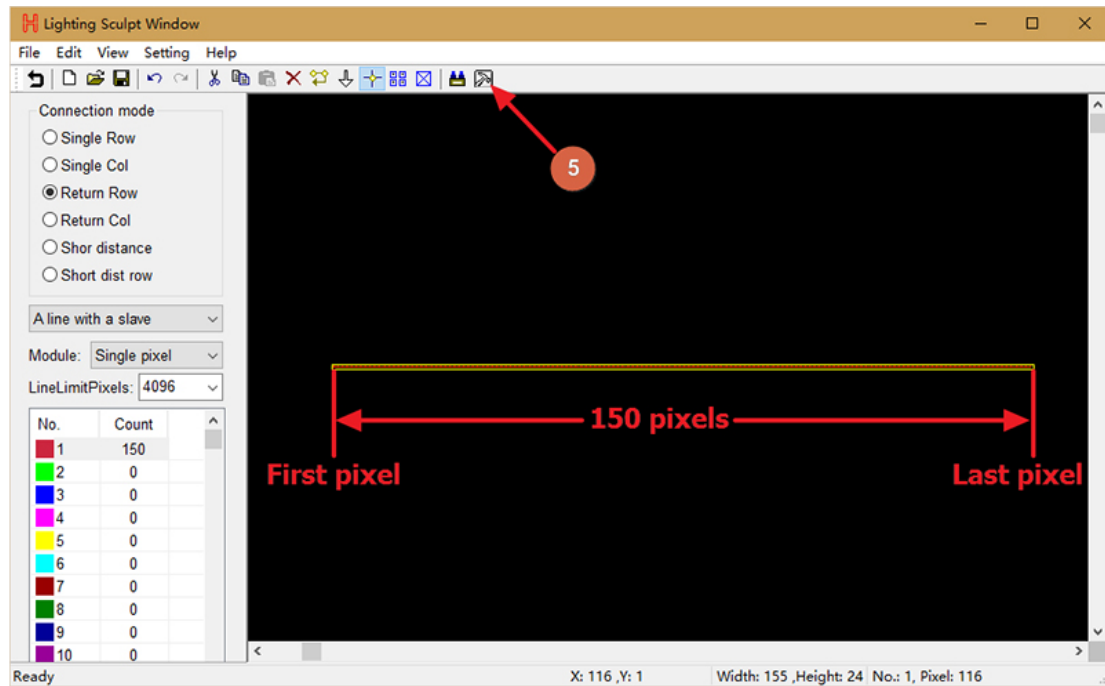
<https://drive.google.com/open?id=0B1gzqyV6hfOgUnFjeG9EM3VRZjA>

Video especially for H801SB:

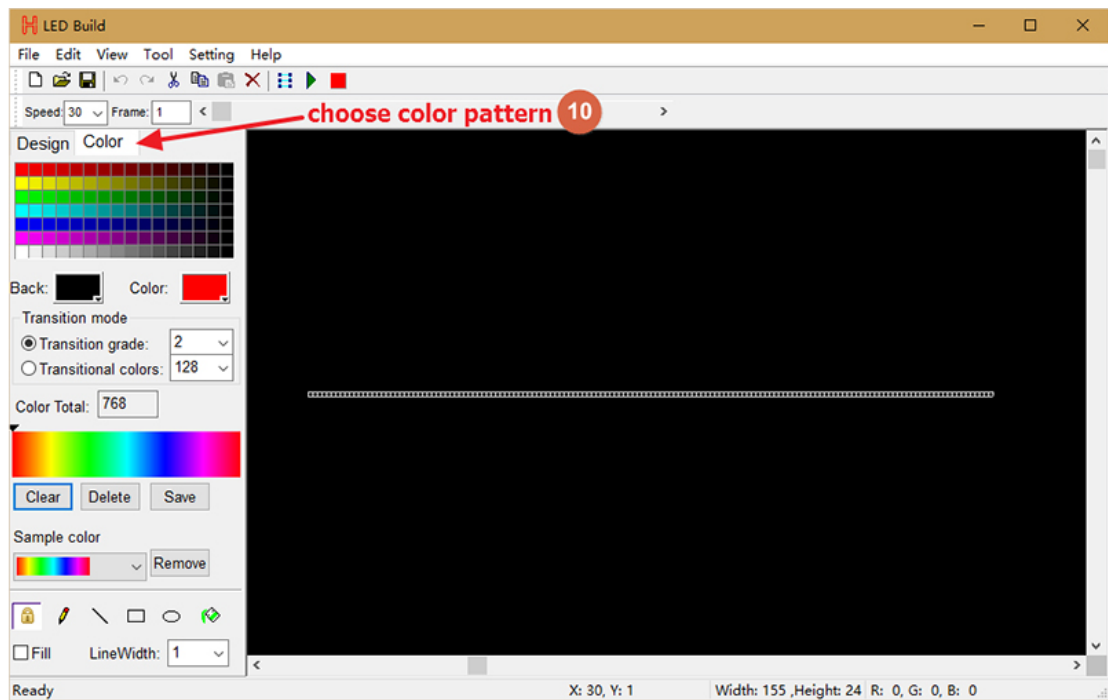
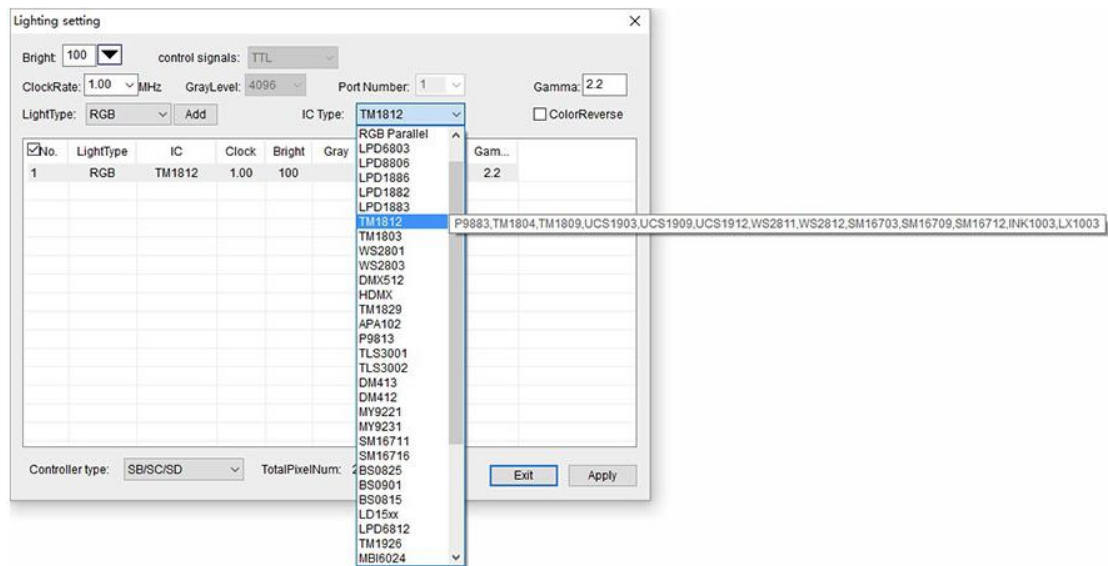
<https://drive.google.com/open?id=0B1gzqyV6hfOgR1IUVEJ2cTNRbm8>

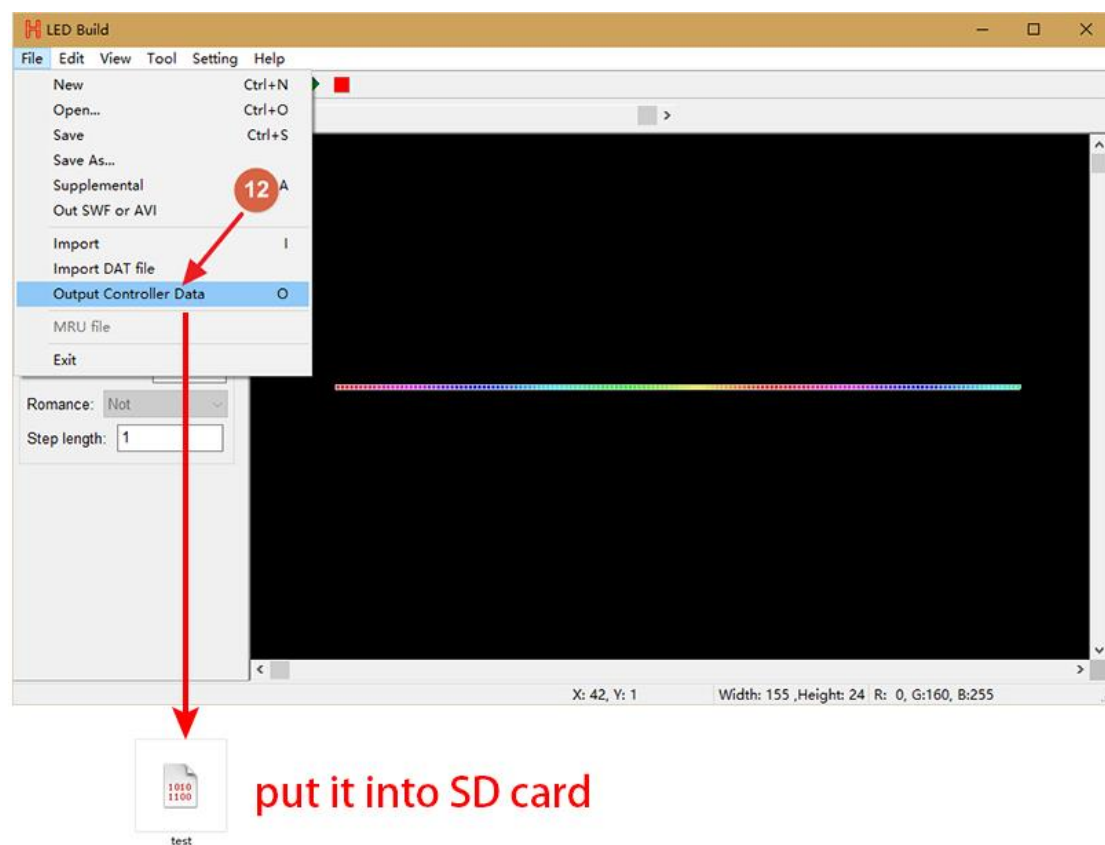
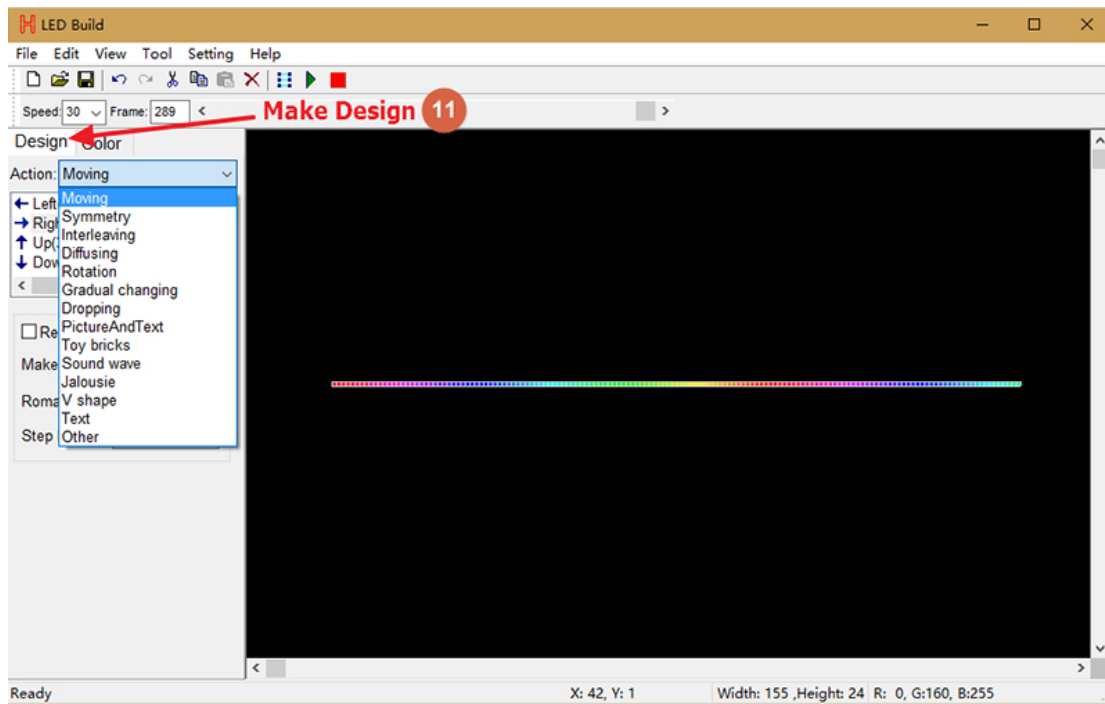
Basic Procedure





Note: lots of chips share one option





For more details of software, please refer to the video.

Test File Download:

https://drive.google.com/open?id=0B1gzqyV6hfOgTkRHRTR2dGs_wT0U

(one port controls 200 pixels, for WS2812B, UCS1903 and other single line chips, just put them into SD card)

Button operation and indicator lights status

Power controller on.

With SD card inserted, green light is on and keeps still, red light is flashing.

Without SD card, green and red light are on and all keep still.

Button	Function	Indicator lights status
LOOP/SINGLE	Switch between loop playback and single playback	Loop playback: green light is on Single playback: green light is off
File	Switch files	Nothing changes
SPEED-, SPEED+	Set speed, maximum speed is 100, minimum speed is 1	Nothing changes
"LOOP/SINGLE" + "SPEED+"	Press and hold "LOOP/SINGLE" + "SPEED+", then loose them all to set address for UCS512 or TM512.	Red light is off, green light is on

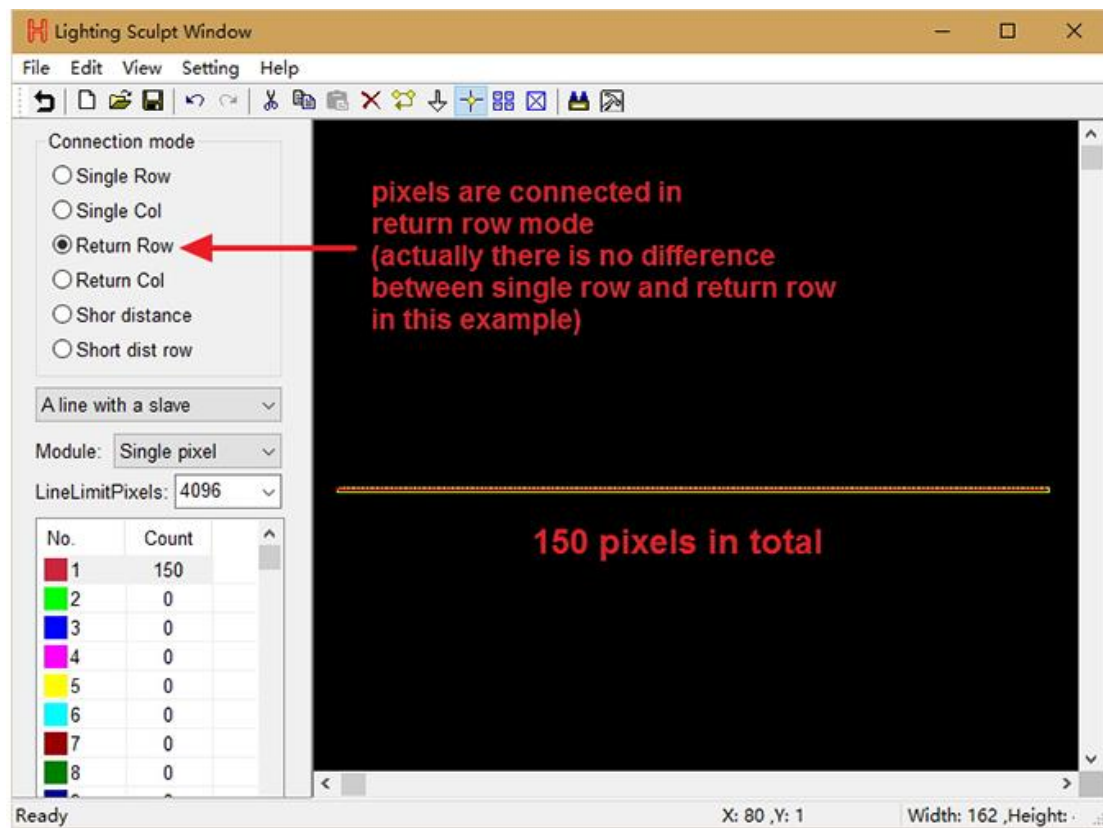
Internal Control Mode

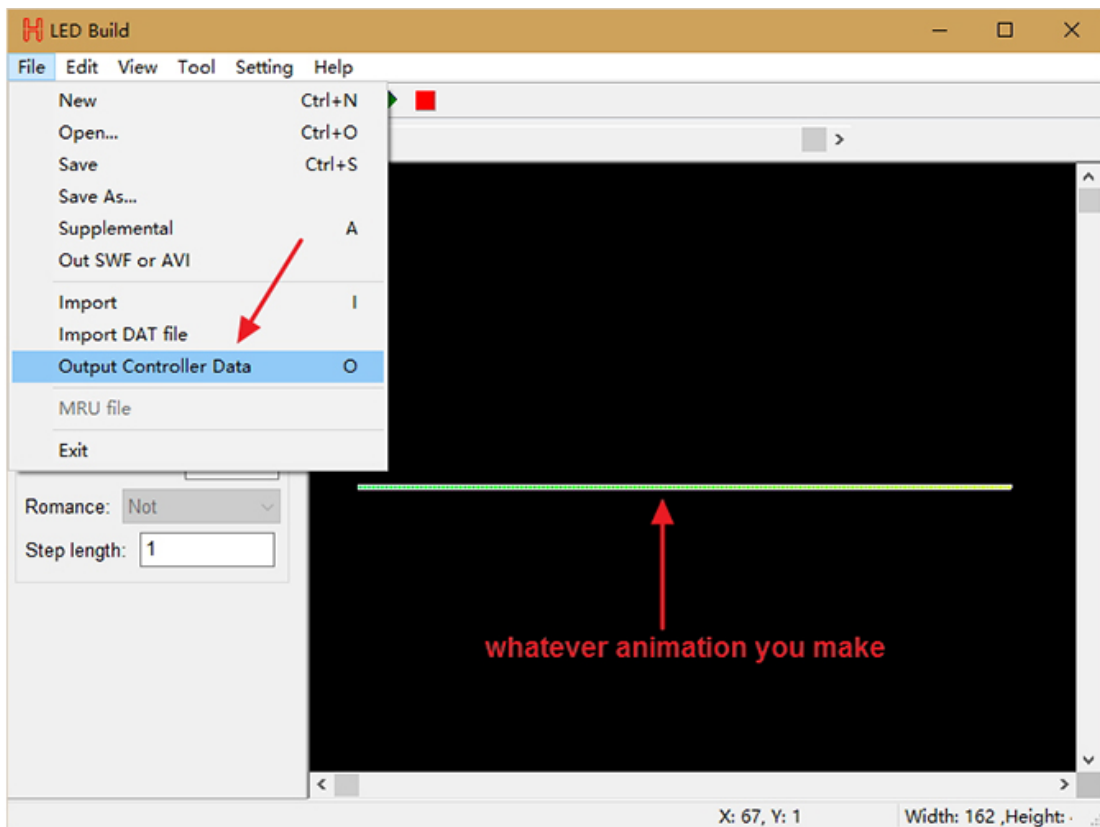
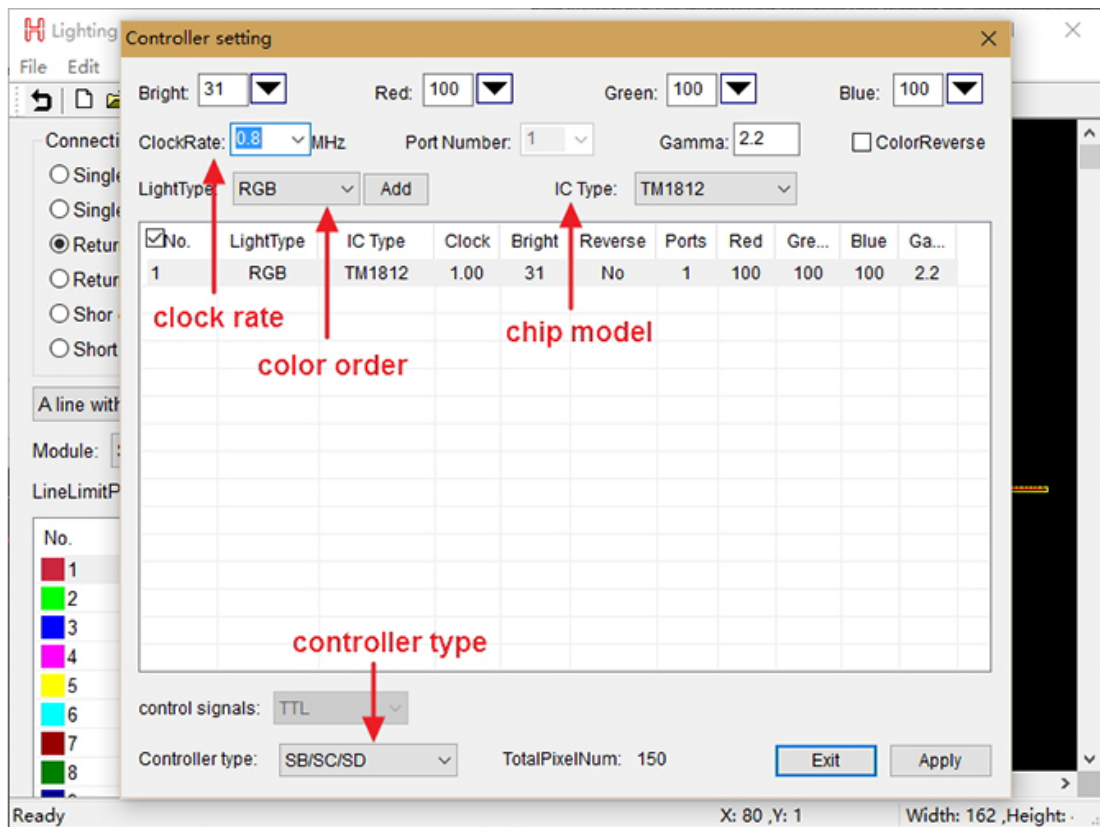
In this mode, controller needs to know

- (1). pixel number
- (2). how pixels are connected
- (3). clock rate
- (4). chip model
- (5). controller type
- (6). color order

Still, we take one roll 5 meters WS2812B strip for example. Color order: RGB. 1m 30 pixels

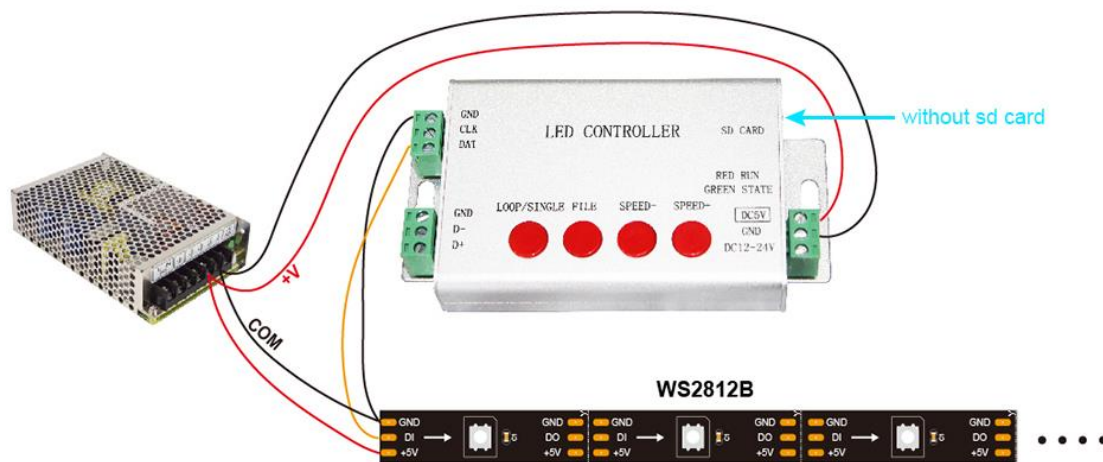
Step 1. Make file needed for this mode in LED Build





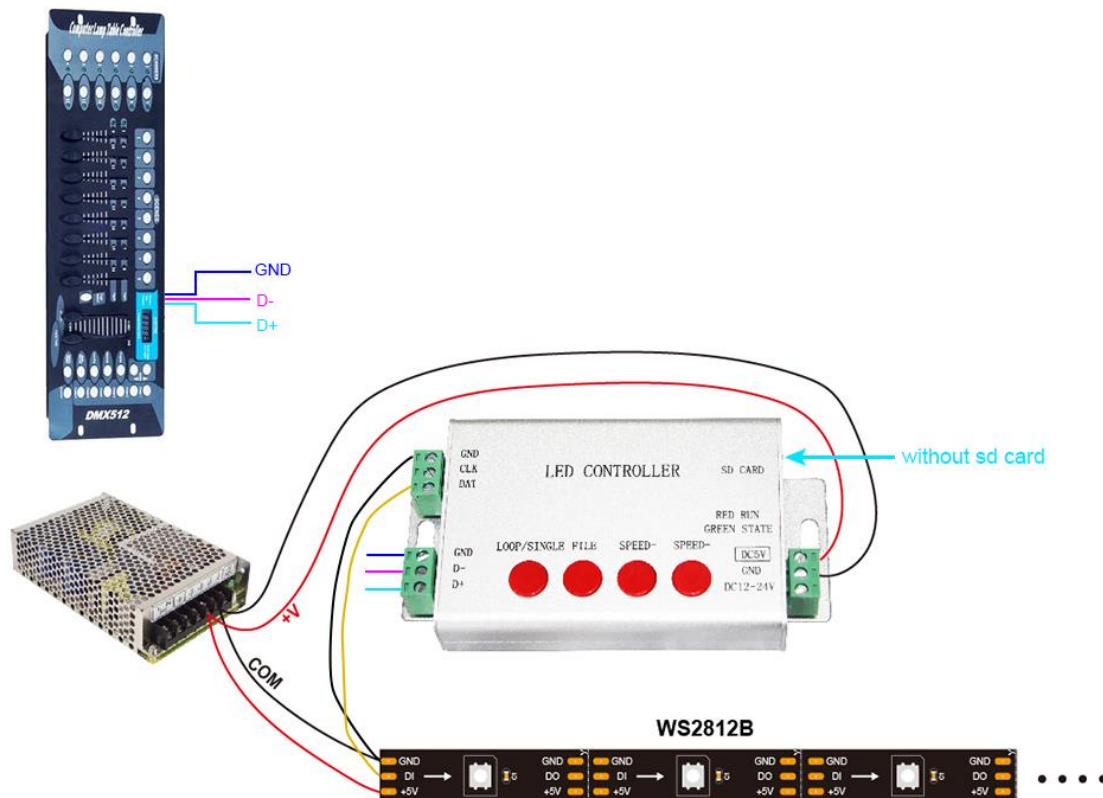
Step 2. Put the file into SD card, insert SD card, power controller on then off, take SD card out, power controller on

Step 3. Connect them all together



There are 18 kinds of animation built-in, press four buttons to control them.

DMX512 Console Mode



The chip type and clock of the control are obtained from the DAT file on the last inserted SD. The control output is from the address of the starting channel to 512 channels. The actual number of lamps connected can be less than that of the control output. When the total number of input channels is less than the initial channel address, the controller has no output.

Note that the channel address is used here, not the point address.

DMX address is set by TXT file name, open SD card root directory, right-click the mouse -> New -> Text document, change the file name to the DMX address to be set. For example: Address 1 file name is 1.TXT, Address 16 file name is 16.txt.



DMX File Exchange Function

If the SD card is inserted and the file name is not, that is to say, the differential synchronization function is not used. D-and D+are connected to the DMX512 console, and files can be switched by the DMX console. Channel value 0-3 corresponds to the first file, 4-7 corresponds to the second file, and so on.

DMX address is set by TXT file name, open SD card root directory, right-click the mouse - > New - > Text document, change the file name to the DMX address to be set. For example: Address 1 file name is 1.TXT, Address 16 file name is 16.txt.



Note:

In this mode, H801SB only supports the following chips

**LPD6803, LPD8806, LPD1882, LPD1889, LPD1883, UCS6909,
UCS6912, UCS1903, UCS1909, UCS1912, WS2801, WS2811,
WS2812, TM1803, TM1804, TM1809, TM1812, TM1913, TM1914,
TM1926, TM1814, INK1003, LX1003, LX2003, LX2006, TLS3001,
P9813, P9816, SM16711.**

Multiple H806SBs work in synchrony mode

In this mode, every controller needs sd card

If you use 3 pin shielded cable, distance between two controllers is up to 100 meters

